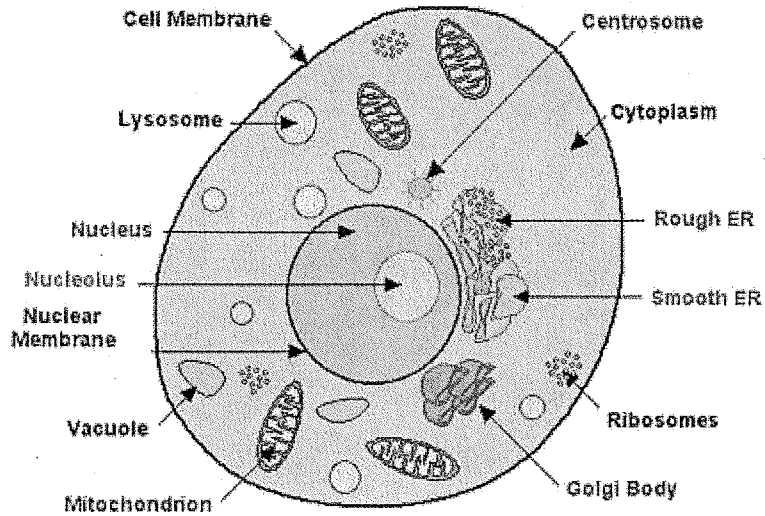


- Finally, make a more complicated drawing. Make a version of this diagram of a cell:



Some hints:

1. Use the circle tool when you can, but use the freeform tool for things to look more natural.
2. Don't try to make your diagram exactly like the one above. Just be similar.
3. It's OK if you don't know what the names mean. Just draw.
4. Use text boxes to make labels. Text boxes are under the Insert tab of the ribbon.

Neatness counts! Good use of color will get you more points than a black and white diagram.

When finished, submit the document to [turnitin.com](https://www.turnitin.com). The filename should end with drawing1. Make it look good!